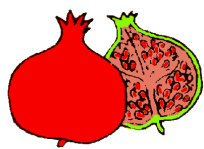


Hindi Alphabets

हिन्दी वर्णमाला

Vowels(13)

अ



अनार

Anaar=Pomegranate

आ



आम

Aam = Mango

इ



इमली

Imli = Tamarind

ई



ईख

Eekh=Sugarcane

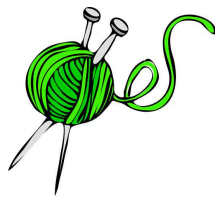
उ



उल्लु

Uloo = Owl

ऊ



ऊन

Oon = Wool

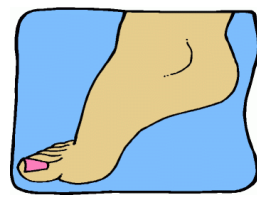
ऋ



ऋषि

Rishi = Sage

ए



एड़ी

Aedi = Heel

ऐ



ऐनक

Aaenak= Spectacles

ओ



ओखली

Okhlee=Mortar&pestle

औ



औरत

Aurat = Woman

अं



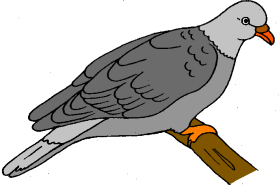
अंगूर

Umgoor=Grapes

अः

Consonants(36)

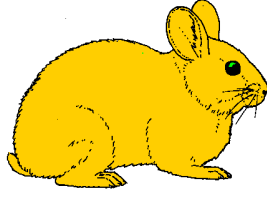
क



कबूतर

Kabootar = Pigeon

ख



खरगोश

Khargosh = Rabbit

ग



गणपति

Ganapati=LordGanesh

घ



घर

Ghar = House

ङ

च



चरखा

Charakha=SpinningWheel

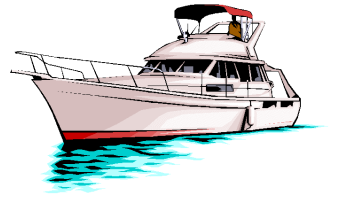
छ



छत्री

Chchatri = Umbrella

ज



जहाज

Jahaj = Ship

Contd.

झ

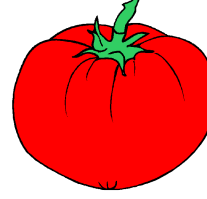


झण्डा

Jhanda = Flag

ज

ट



टमाटर

Tamatar = Tomato

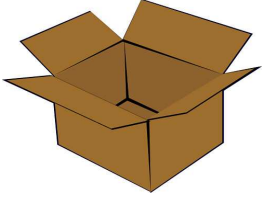
ठ



ठठेरा

Thathera=BlackSmith

ड



डड्ढा

Dabba = Box

ढ



ढोल

Dhol = Drum

ट



तराजु

Taraju=BalanceScale

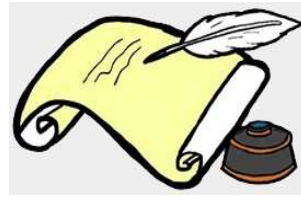
थ



रथ

Rath = Chariot

द



दददत

Davat = Ink Pot

ध



धधुष्य

Dhanushya=Bow

न

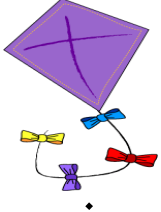


नल

Nal = Tap

Contd.

प



पतंग

Patang = Kite

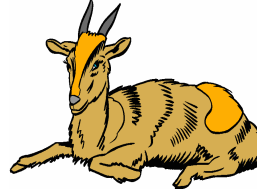
फ



फल

Phal = Fruit

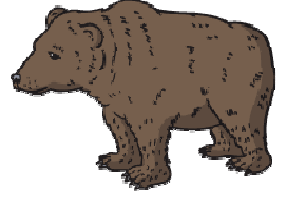
ब



बकरी

Bakri = Goat

भ



भालु

Bhaalu = Bear

म



मछली

Machchali = Fish

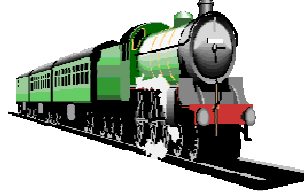
य



यज्ञ

Yagnya = Offerings
made to the holy fire

र



रेल

Rail

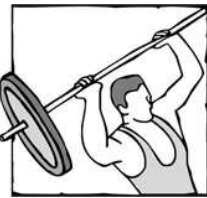
ल



लड़का

Ladka = Boy

व



वजन

Vajan = Weight

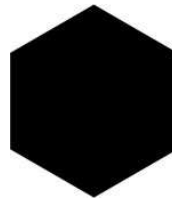
श



शंख

Shamkh = Shell

ष



षटकोन

Sshhatcone = Hexagon

स

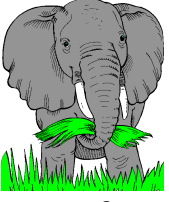


सब्जी

Sabji = Vegetables

Contd.

ह



हाथी

Hathi = Elephant

क्ष



क्षत्रिय

Kshatriya = Warrior

त्र



त्रिशूल

Trishool = Trident

ज्ञ



ज्ञानी

Gnyaani=Knowlegable
Person